

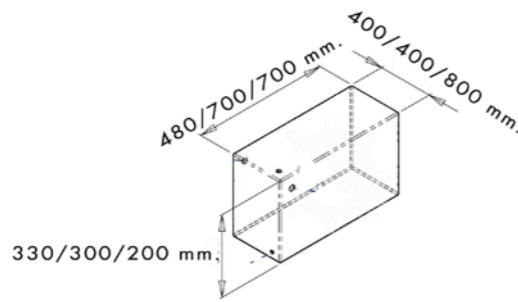
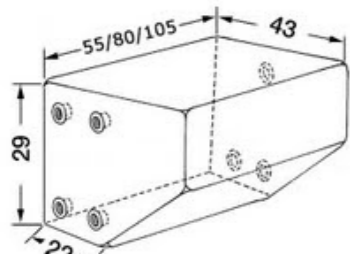
**POLYTHENE WASTE TANKS.**

Complete with 4 dead female unions 3/4" dim. 19/20 mm. and 4 dead female unions 1 1/2" dim 38/40 mm. for rubber gasket. Complies with iso 8099.

- CD. 9100000547 50 lt. 480 x 400 x 330 mm - rectangular
- CD. 9100000578 72 lt. 700 x 400 x 300 mm - rectangular
- CD. 9100005112 112 lt. 700 x 800 x 200 mm - rectangular
- CD. 9000000550 40 lt. 430 x 550 x 290 mm - rounded shape
- CD. 9000000575 75 lt. 430 x 800 x 290 mm - rounded shape
- CD. 9000000598 98 lt. 430 x 1050 x 290 mm - rounded shape

ROUNDED SHAPE

RECTANGULAR SHAPE



**ACTIVE CARBON FILTER**

Complete filter with 5/8" 3/4" ,1" nipples, Manufactured in light alloy and nylon this filter must be installed in the highest possible location along the breather of the tank. Carbon lifetime approx. 1 year.

CD. 9000000600 16/19/25 mm



**LEVEL INDICATOR:**

Probes holder with 5 bushes in which there are 3 stainless steel probes for waste water mixture tank units. Plastic bushes 20 mm long, to avoid risk of short circuit due to the humidity inside the tank. A panel with a scale of 3 leds is advising on the almost full tank. Both holders and panels have VDO connections.

- CD. 4500000140 LEVEL INDICATOR AND PROBES
- CD. 4500000118 PROBE STANDARD
- CD. 4500000119 PROBE LENGHT 20 CM FOR 47 L. TANK.



**WASTE LARGE WATER MANUAL PUMPS:**

Largest capacity manual bilge pump. Manufactured by hand using high quality materials. The heavy duty pump is ideal when long term durability and high performance is vital.



Three mounting options. A design that has been tried tested and trusted by sailors for decades. This clever bilge pump design allows great versatility in installation so that you can fit the pump in the orientation to best suit your boat.

- Most versatile high performance pump design
- 3 mounting orientations 1 pump (on-deck, thru-deck, on-bulkhead)
- High Performance - flow rate 56 ltrs (per min)
- Ease of maintenance inspection hatch - no tools required

- CD. 5800000510 LARGE 1000 (on-deck, thru-deck, on-bulkhead)
- CD. 5800000520 LARGE 2000 (on-deck, on-bulkhead)
- CD. 5800000530 LARGE 3000 (thru-deck)
- CD. 5800003005 seal kit (easy fittings)
- CD. 5800009000 gasket kit nitrile rubber.



**GREY & BLACK DIAPHRAGM WATER PUMPS:**



- Compact and simple design
- Flexible installation
- No filter required
- Can run dry.
- Can pump air/water mixture
- Low power consumption
- Quiet operation
- Meets ISO 8846 EN55014 Standards
- 360 rotational pump body
- Double non-return valve.

A modern diaphragm pump that can be set up in several applications and with different pump motor configurations. It is easy to install as a bilge pump in any leisure craft or anywhere after the drain outlet in the waste water system or directly in the Matromarine waste water tank. No filters required, the pump can run dry, and can also handle a mixture of air and water without difficulty. Perfect for installation in tight spaces, the Laguna shower drain pump can be incorporated into a small boat bilge space. Available in version with double 19/25 mm port connection and 38 mm port connection. 38 mm version is equipped with straight and 360 degrees angled rotational port connection.

PART. N.	VOLT	AMP	FLOW LPM/MIN	FLOW LPM 1,5 MT	HOSE CONNECTION MM.	DIMENSIONS MM.
8700101112	12	4,5	22	18	19-25 (GREY)	305x195x125mm
8700101124	24	2,5	22	18	19-25 (GREY)	305x195x125mm
8700001112	12	6	32	26	38 (WASTE)	355x195x125mm
8700001124	24	3	32	26	38 (WASTE)	355x195x125mm

**MACERATOR PUMP**

Macerator with stainless steel or brass internal pump body or brass and rubber impeller discharge pump - self priming up to 2 mt. vertical lift.

- 43 LPM output and max 4 mt. total head
- macerates and discharges water and waste mixtures.

**MAXI MACERATOR PUMP**

Toilet waste macerator pump, 47 min. rated, can discharge tanks up to 2100 litres. Bronze pump body total head up to 5 mt. vertical lift.



PART. N.	VOLT	AMP	FLOW	FLOW 3MT	CONNECTION IN/OUT	PUMP BODY	DIMENSIONS
5500001112	12	12	43 LPM	23 LPM	38 HOSE BARB1 1/2"/25 MM.	THERMO-POLYMER/S.S.	240X130X90mm
5500001124	24	7	43 LPM	23 LPM	38 HOSE BARB1 1/2"/25 MM.	THERMO-POLYMER/S.S.	240X130X90mm
5500000912	12	12	43 LPM	23 LPM	38 HOSE BARB1 1/2"/25 MM.	BRONZE	240X130X90mm
5500000824	24	7	43 LPM	23 LPM	38 HOSE BARB1 1/2"/25 MM.	BRONZE	240x130X90mm
5500001012	12	14	47 LPM	33 LPM	38 HOSE BARB1 1/2"/25 MM.	BRONZE	270X130X90mm
5500001024	24	8	47 LPM	33 LPM	38 HOSE BARB1 1/2"/25 MM.	BRONZE	270x130X90mm

